

FOR IMMEDIATE RELEASE:

CONTACT:

Jim Mimplitz, SCADAmetrics
1133 Pond Road
Wildwood, MO 63038 USA
Voice: 636.405.7101, Fax: 314.669.6970
scadametrics.com

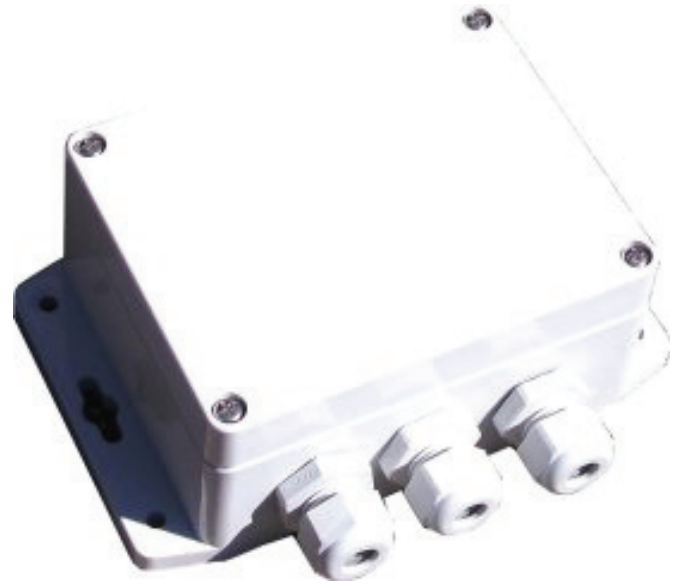
Outdoor-Rated, Wall-Mountable Radio-Read Filter Introduced.

St. Louis, Missouri
10 October 2011.

At many water meter locations, it is desirable to connect the meter to both a meter display unit AND an AMR radio endpoint. A popular meter display unit is the [VisuLink VL9](#) by Kemp-Meek Manufacturing; and example AMR radio endpoints include the [Neptune R900](#), [Sensus MXU](#), [Itron ERT](#), and many others.

Today, SCADAmetrics makes dual water meter-reading possible with the introduction of the RRF-W "Radio-Read Filter, Wall-Mount Version".

The RRF-W is housed within a weatherproof NEMA-4X wall-mountable enclosure; and because it derives all necessary power from the connected meter readers, the RRF-W does not require batteries or an external power supply.



RRF-50-W Radio-Read Filter.



About SCADAmetrics –

SCADAmetrics is the manufacturer of the EtherMeter™ SCADA/Meter Gateway – the device that enables Telemetry and SCADA System Integrators to read municipal and industrial water meters using MODBUS® and Rockwell Automation industrial protocols.

–END–